



Aug 21, 22, 23

STAGE RACE

FINISH YOUR SEASON WITH A BANG



Perpetuate Better Living



FRIDAY PM - MCBETH PROLOGUE

PRO 1/2 - 5K - 6:30PM

CAT 3 - 5K - 6:45PM

CAT 4/5 - 5K - 7:00PM

MASTERS 40+/50+/60+ - 5K - 7:15PM

WOMEN 1/2/3 - 5K - 7:30PM

Cat 4 WOMEN - 5K - 7:35PM

SATURDAY ALL DAY - BRIGGS HILL RR

CAT 3 - 57 MILES - 10:00AM

CAT 4/5 - 57 MILES - 10:10AM

Cat 4 WOMEN - 38 MILES - 10:15AM

PRO 1/2 - 76 MILES - 1:00PM

MAS 40+/50+/60+ - 57 MILES - 1:10PM

WOMEN 1/2/3 - 57 MILES - 1:15PM

SUNDAY AM - COBURG TT

PRO 1/2 - 15 MILES - 9:00AM

CAT 3 - 15 MILES - 9:15AM

CAT 4/5 - 15 MILES - 9:30AM

MAS 40+/50+/60+ - 15 MILES - 9:45AM

WOMEN 1/2/3 - 15 MILES - 10:00AM

Cat 4 WOMEN - 15 MILES - 10:05AM

SUNDAY PM - CELEBRATION

CRITERIUM

CAT 3 - 40 MINUTES - 2:00PM

WOMEN 1/2/3 - 40 MINUTES - 2:45PM

PRO 1/2 - 60 MINUTES - 3:30PM

MAS 40+/50+/60+ - 40 MIN - 4:35PM

Cat 4 WOMEN - 30 MINUTES - 5:25PM

CAT 4/5 - 30 MINUTES - 6:00PM

\$2000 Prize List

Pro 1/2 \$700 – 10 deep

Women 1/2/3 \$400 – 5 deep

Cat 3 \$300 – 5 deep

Cat 4/5 \$200 (Gift C) – 5 deep

Masters 40+/50+/60+ \$300 – 2 deep each

Cat 4 Women \$100 (Gift C) – 5 deep

McBeth Prologue – 2K flat then 3K moderate climb

Briggs Hill RR – Rollers and 1.5 mile climb with switchbacks

Coburg TT – Flat and fast loop

Celebration Criterium – Flat and wide open

\$80 Pre-registration ends 8/15

Do not mail registration after that date

\$375 for each 5 Rider Team

comotionclassic@comcast.net

Day-of registration is \$90 at Prologue

Co-Motion Classic Racing

28238 Andrews Lane

Corvallis, OR 97330

(541) 521-6529



Registration forms can be found at www.obra.org

OBRA license required - \$25 annual or \$5 event

This is an OBRA event, all rules apply. Helmets required

Prologue and packet pick-up at:

Good Shepherd Lutheran Church

85780 McBeth Road, Eugene

SPEND 3 DAYS IN OREGON - ENJOY BEAUTIFUL SCENERY - GO ANAEROBIC

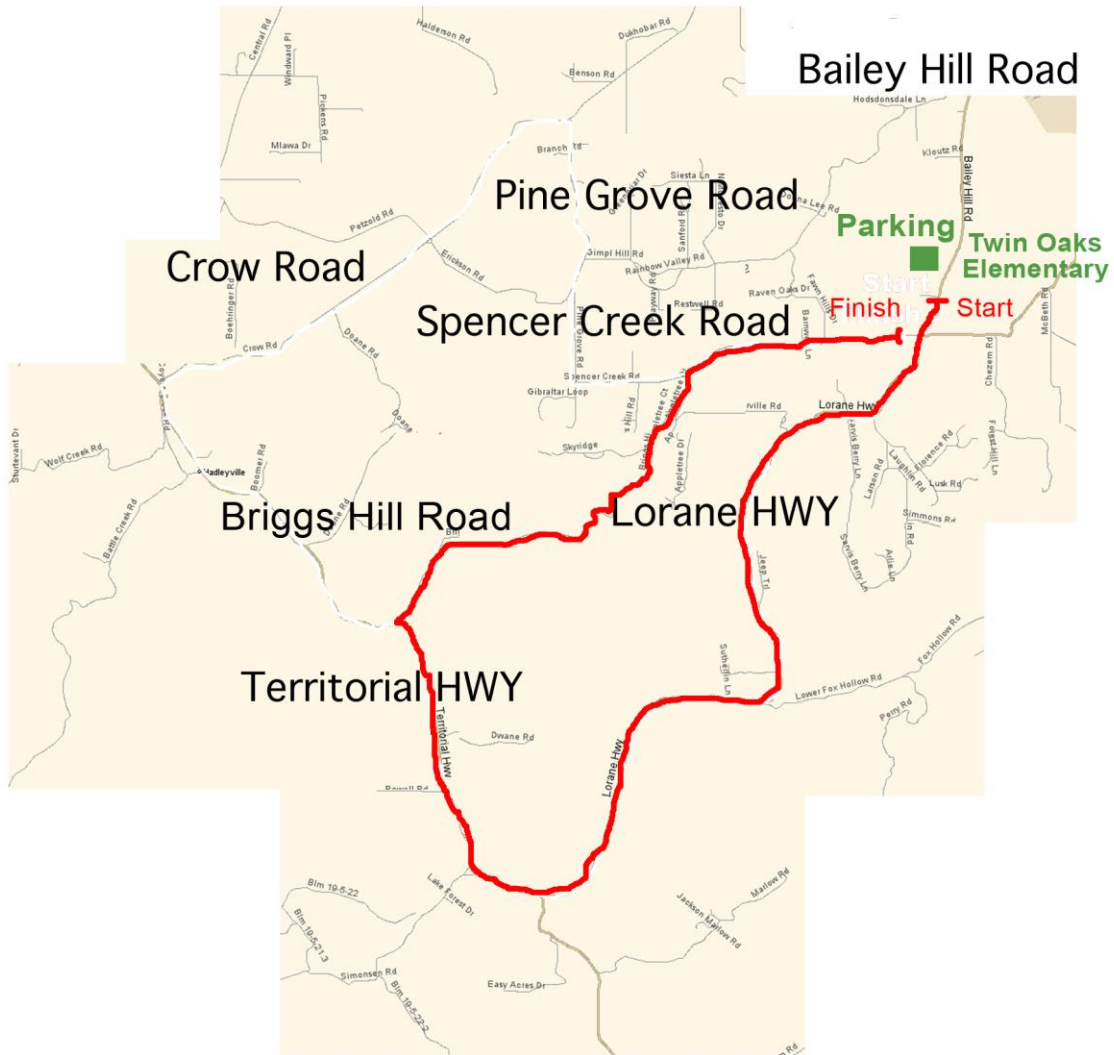


Hello and Welcome to the Eugene Celebration Stage Race.

This is your official Race Bible. The packet also includes stage maps, driving directions, and a schedule. But first, here are the Rules and Regulations.

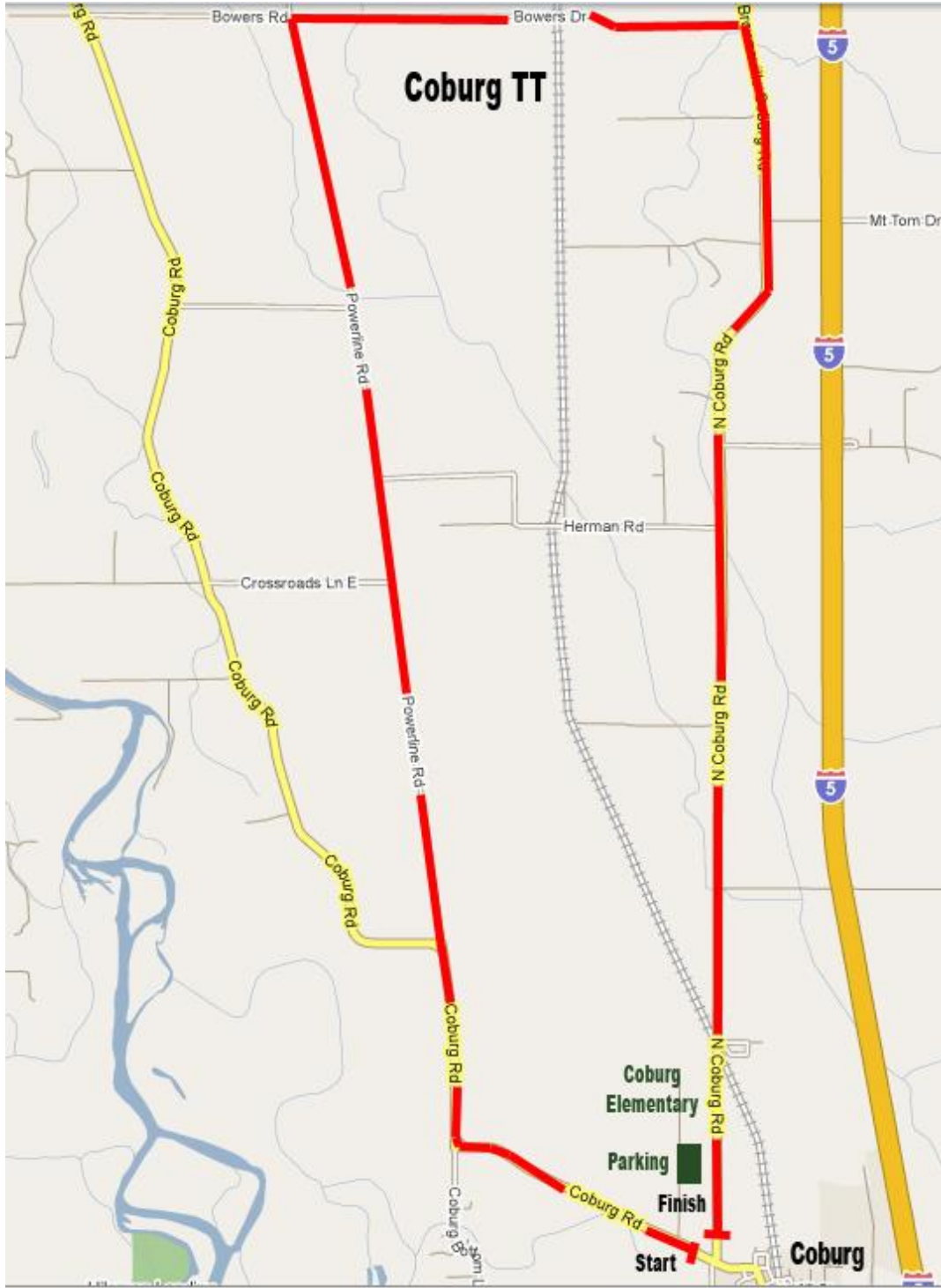
1. The race will be divided into six groups. They are: Pro 1/2, 3, 4/5, Masters 40+/50+/60+, Women 1/2/3 and Women 4/5. Masters 40+/50+/60+ are scored separately.
2. Eugene Celebration is a true stage race run on General Classification. Each stage must be completed in order to continue. Cumulative overall elapsed time will decide the placing of each rider. Any rider that does not finish the Prologue will be given a pro-rated time. There are three time bonuses available to each group, -15 seconds to the winner of the Celebration Criterium, -10 sec to 2nd place, and -5 sec to 3rd. Sign-in required for RR and Crit.
3. Briggs Hill Road Race is neutral through the first intersection.
4. Do not congregate at the finish lines. Proceed to the staging area, where results will be posted.
5. Lapped riders in the Celebration Criterium will be given pro-rated times. Any rider with a technical problem during the TT can finish and get a pro-rated time.
6. All stages will be run "rain or shine", but the race director reserves the right to change any course for safety reasons.
7. Race Support is Neutral.
8. Each rider must be an OBRA member and sign a waiver. Numbers on the right for all stages. Second center number on pockets is strongly encouraged. Wear a helmet whenever on a bike.
9. The "Feed Zone" for the Briggs Hill Road Race is at the top of Welder's Hill, about 4 miles into the race on Lorane HWY. No feed the first time by.
10. Coburg Time Trial start times will be in the reverse order of GC.
11. Unmanned corners will have sandwich boards with pointer arrows.
12. Crossing the centerline is strictly forbidden except at 200 meters to the finish for the Briggs Hill Road Race.

Briggs Hill Road Race



**From Eugene take 11th Ave West
Pass Chambers Street
Pass Burger King and Fred Meyer
Left on Bailey Hill
Left to continue on Bailey Hill
Twin Oaks School on right before Spencer Creek**

85916 Bailey Hill Road, Eugene OR 97405



Directions to Coburg Elementary School
91274 N Coburg Road, Coburg

Take Exit 199 off I-5. Head West on E Pearl St. Go Right on Coburg Road through town. Take a right on Coburg Road North. School is just past Fire Station.



4051 W 1st Ave, Eugene OR 97402