



# Keizer Rapids Cyclocross Series

WEDNESDAYS, AUGUST 19TH, 26TH,  
& SEPTEMBER 2ND



1.5 MILE COURSE WITH A MIX OF  
SINGLE/DOUBLE TRACK, PAVEMENT,  
GRAVEL, GRASS, BARRIERS,  
AND A RUN UP!

Registration opens at 5:00. \$15 entry fee or \$40 for the series.  
2nd race of the evening is \$5.  
Series pass will available before Race #1 ONLY.

#### Series Points & Awards:

Points are awarded 15 deep in each race. Points schedule is  
31,25,22,19,17,15,13,11,9,7,5,4,3,2,1.

- Series awards only (3 deep). Cash payout to Pro/Cat 1 Men/Women
- You must race all 3 races to qualify for cash payout in CAT A's  
all other categories scores will be compiled and series winner  
will be the racer with the highest total regardless of number of races.

Prizes Cat A, payout is the same for men and women 1st – \$100 ~ 2nd – \$75 ~ 3rd - \$50

### *All OBRA Rules and Regulations Apply*

5:45 Beginners, Juniors, C's (30 min)

6:20 - B's, Single Speed, Master's 50+  
(30 min) (men & women)

6:55 - A's (40 min) (men & women)

Kiddie race will run during the 5:45 race.

As always, Junior's race for free during the  
junior race only.

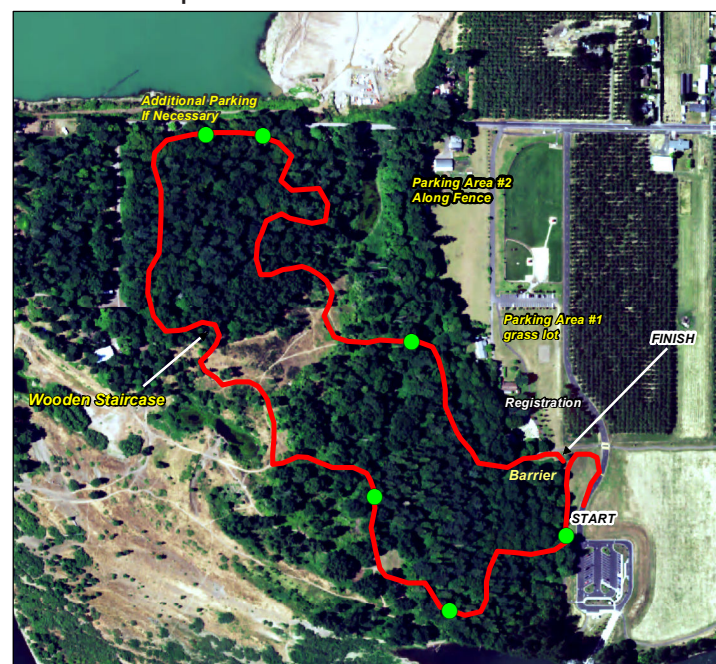
#### Race Plates:

Race numbered plates will be provided. \$5 replacement  
fee if original plate is lost or forgotten.

**Promoter/Contact, Jarod Seaman:**

503-949-6351 / jdakar92@hotmail.com

Course Map



#### Legend

● Areas of interest -- Pedestrian interactions  
— Race Course -- Approx. 1.6 miles

Registration will be on the grass  
across from the amphitheater.



## MetaFilter

poster provided by:



**Directions: Keizer Rapids Park, 1900 CHEMAWA RD N. Keizer OR 97303**

**From Portland**, take exit 260B towards Keizer, turn right onto Chemawa Road. Turn left to stay on Chemawa Rd NE (Chemawa Rd NE is 0.1 miles past Stadium Dr NE). Once on Chemawa Road continue straight through the four-way stop at Verda Lane and straight through the River Road intersection heading west on Chemawa Road. Your destination is 1900 CHEMAWA RD.

**From South**, Take the Chemawa Rd exit, EXIT 260, toward Keizer. Turn left onto Chemawa Rd NE. Turn left to stay on Chemawa Rd NE (Chemawa Rd NE is 0.1 miles past Stadium Dr NE). Once on Chemawa Road continue straight through the four-way stop at Verda Lane and straight through the River Road intersection heading west on Chemawa Road. Your destination is 1900 CHEMAWA RD.